

# USER GUIDE



CATV EYDFA

PON+CATV EYDFA

## WARNING

---

- Installation and debugging of the EDFA should be done only by qualified or experienced technician;
- Make sure the grounding resistance is less than  $4\Omega$ ;
- Do not turn on the device before it connects to the system, or without rubber cover, in case of the connectors being burnt out;
- Do not look directly into optical output port with naked eyes while the EDFA is operating;
- Please make sure the connectors match with the device connectors, SC/APC - SC/APC, SC/PC - SC/PC, and keep those connectors clean when inputting and wipe the dust on the surface with absolute alcohol or absorbent cotton;
- EDFA (with output power  $\geq 20\text{dBm}$  per port) is made with factory setting "safe pluggable mode" status "on" with default output power  $19\text{dBm}$ , in order to protect the connectors from burning out by misoperation, please see detailed instruction on page 3 of the user manual to turn off this function after testing;
- UPS (uninterrupted power supply) system is suggested for areas with frequent power outage.

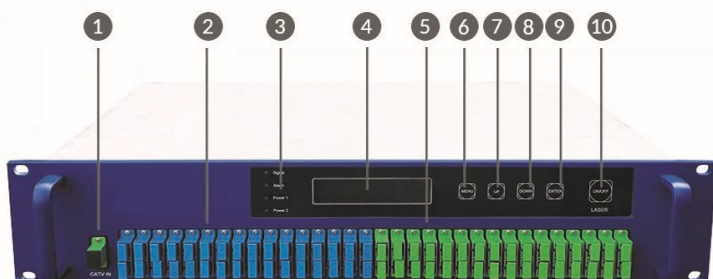
## WARRANTY

---

- Each device has the serial number (bar code). To the date of sale can provide two years;
- Non-human factors that can not damage laser. If the machine flashes a red light (hint alarms), device should be sent back to the manufacturer to under warranty. Users shall not open the lid for maintenance, otherwise repairs and materials should be charged even during the warranty period;
- After warranty expires, we provide life-long maintenance and equipment upgrades;
- Damage caused by power supply error or man-made failures are required to bear materials costs for repairing.

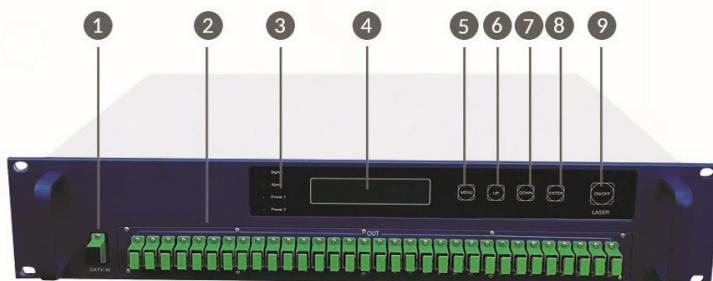
# EQUIPMENT STRUCTURE

## □ PON+CATV EYDFA

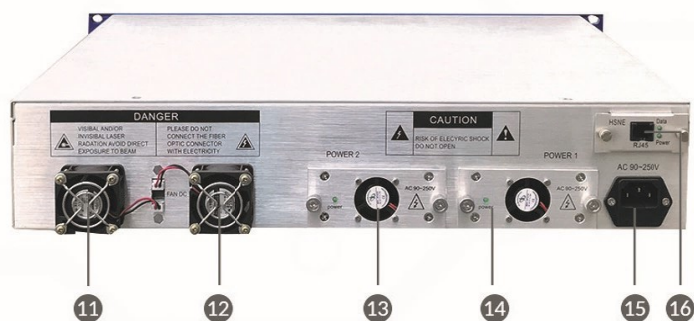


- 1 CATV input port ( 2 CATV input ports option)
- 2 PON Signal Input
- 3 Indicator light
- 4 LCD Display
- 5 Optical Signal Output
- 6 Menu Button
- 7 UP Button
- 8 DOWN Button
- 9 ENTER Confirm Button
- 10 Laser Lock

## □ CATV EYDFA



- 1 CATV input port ( 2 CATV input ports option)
- 2 PON Signal Input
- 3 Indicator light
- 4 LCD Display
- 5 Menu Button
- 6 UP Button
- 7 DOWN Button
- 8 ENTER Confirm Button
- 9 Laser Lock





- 11 FAN Group 1
- 12 FAN Group 2
- 13 Module Power Supply 1 (DC-48V/AC-220V)
- 14 Module Power Supply 2 (DC-48V/AC-220V)
- 15 Power IN port
- 16 NE Web Management Transponder

# OPERATION INSTRUCTION

Connect the jumpers properly before turning on the device, then switch on the power supply, after that, model number shows on the LCD panel;

Default setting is "LASER POWER OFF", press "LASER", the laser is on. (Press again, laser off.)

Press "MENU", operator can get following parameters, press "ENTER" to check submenu.

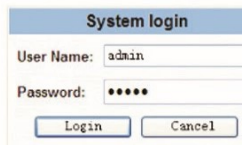
Main Menu		Sub Menu	Remark
PON CATV EDFA PARAMETER CHECK	Press ENTER to Sub Menu  Browse by pressing DOWN/UP	5V POWER 1:5.02V -5V POWER 1:-5.02V	All parameters on submenu are real time detection value, if any parameter shows "-" afterwards, it means this item goes wrong, the STATUS lights on turns red and flash at the mean time, the microprocessor will automatically turn off laser power to protect the device. Please contact the Fullwell.
		5V POWER 2:5.02V -5V POWER 2:-5.02V	
		PER CURR:2.54A PRE TEMP:24.5C	
		HEAT TEC:0.65A PRE POWER:15.6dBm	
		OPT1 BIAS:3.54A OPT2 BIAS:3.55A	
		OPT TEMP1:25.4C OPT TEMP2:25.3C	
		EQU TEMP:17.4C OPT IN PW:-0.8dBm	
		OPT PW1:20.2dBm OPT PW2:20.6dBm	
		VERSION:V2.3A Mar 01 2017	
		PON CATV EDFA SN:J4-170301H#101	
PON CATV EDFA PARAMETER SET	Press ENTER to Sub Menu  Browse by pressing DOWN/UP	SAFE PLUGGABLE MODE OFF	EDFA with output power(per port) $\geq$ 20dBm is designed with this function, and output power decreases to 19 dBm when this function is turned on. Setting function: on this submeanu, press "ENTER" until it shows blinking cursor, press "UP" or "DOWN" to get the required mode (ON / OFF), then press ENTER to confirm.
		SAFE PLUGGABLE MODE ON	
		IP ADDRESS: 192.168.111.111	The above five settings are related to web management functions. The following settings are very pivotal and please set carefully.
		GETWAY ADDR: 192.168.111.001	
		SUB MASK ADDR: 255.255.255.000	
		TRAPI IP ADDR: 192.168.111.005	
		TRAP2 IP ADDR: 192.168.111.006	
		FAN:AUTO POWER SUPPLY:DUAL	Fan setting is ON and AUTO, "ON": fans are active all the time; "AUTO": fans will be active automatically while main circuit detects case temperature is over 35 °C. Power setting can set power supply 1, power supply 2, dual power supply and auto. "power supply 1": only power supply 1 is working; "power supply 2": only power supply 2 is working; "dual power supply": power supply 1 and 2 are working together; "auto": power supply 1 is operating by default and power supply 2 will be active automatically while detected power supply 1 is abnormal.
		OPT PW SET1 22.1dBm OPT PW SET2 22.1dBm	Adjustable output power range: 0~ -3dBm
		Function setting: find corresponding menu, and press ENTER until it shows blinking cursor, then press "UP" or "DOWN" to set the parameters, and confirm the setting by "ENTER" in the end.	

# APPLICATION OF NETWORK MANAGEMENT SYSTEM

Set up IP address, gateway address, sub mask address and server address, then connect the RJ45 interface to the LAN (Ethernet), and connect any of the LAN Ethernet port with the main server connection. After that, install a standard HFC network device management system application software for master network management server (PC), in that case the operator can monitor the real time operating status of the device with network management system.

## WEB network management system (NMS) login and inquire:

NMS transponder admin IP address is 192.168.2.123, setting PC in same segment and open page of login (see right side login pic), then press “Login” entry NMS main page (see picture below);



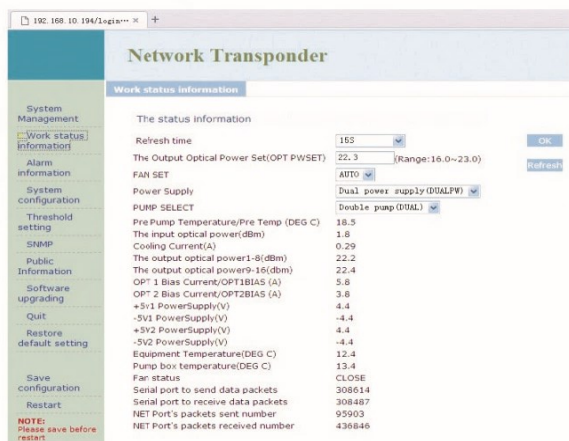
A screenshot of a web-based login form titled "System login". It contains two input fields: "User Name:" with the text "admin" and "Password:" with six dots. Below the fields are two buttons: "Login" and "Cancel".

User Name:admin  
Password : admin



## Web management Parameters and Inquiries Setting:

Click menu “Work status information” to check or set required functions and parameters, see below picture:



# PRODUCT APPLICATION

